

Stadtkomplex
Dortelweil

Dortelweil şehir
kompleksi

综合体规划建筑设计方案



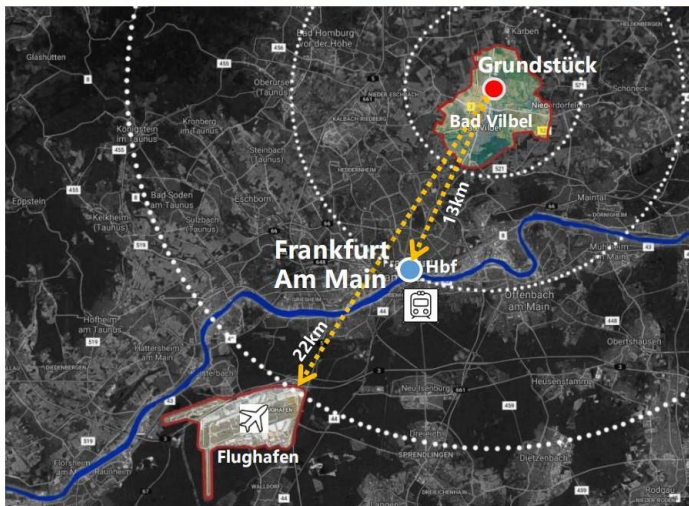


法兰克福 *Orstedweil* 项目





Frankfurt am Main



用地分析
(Analyse des Grundstücks)



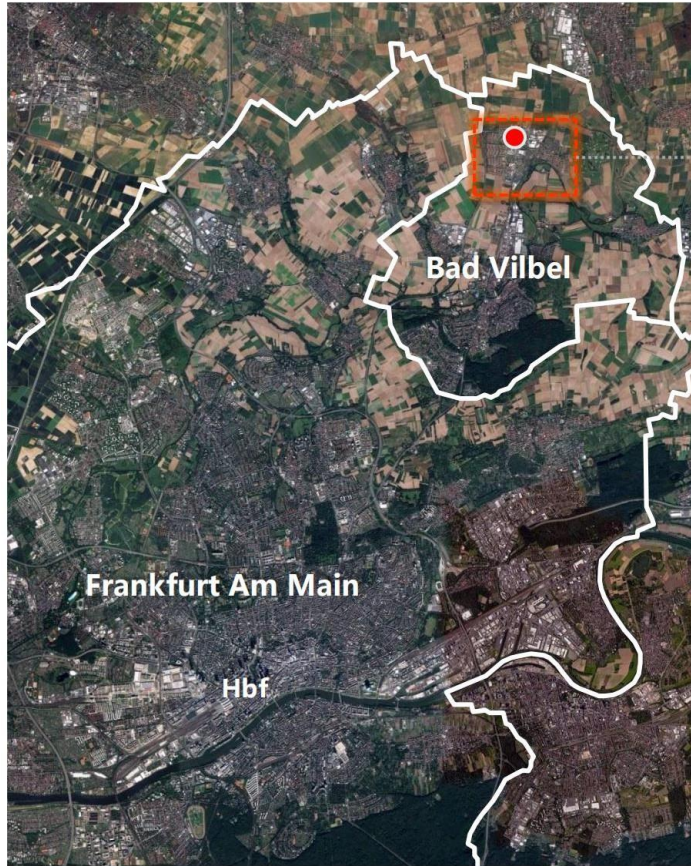
项 交 兰 Mülk, Hessen'in yan kesiminde ve Frankfurt am Main'e yakın bir konumdadır。 Frankfurt Hbf'den 13km ve havaalanından 22km uzaklıktadır

Das Grundstück liegt im südlichen Teil von Hessen und in die Nähe von Frankfurt am Main. Es ist 13km vom Frankfurt Hbf und 22km vom Flughafen entfernt

- 基地 (Grundstück)
- 市中心 (Stadtzentrum)
- ✈ 飞机场 (Flughafen)
- 🚂 火车站 (Hauptbahnhof)



用地分析
(Analyse des Grundstücks)



- yerleşim (Wohnung)
- Ticari (Gewerbe)
- sular (Wasser)
- Yesil alan (Grünfläche)
- (Verwaltung Schulung)
- Idari Bölge Kültür ve Eğitim
- temel (Grundstück)

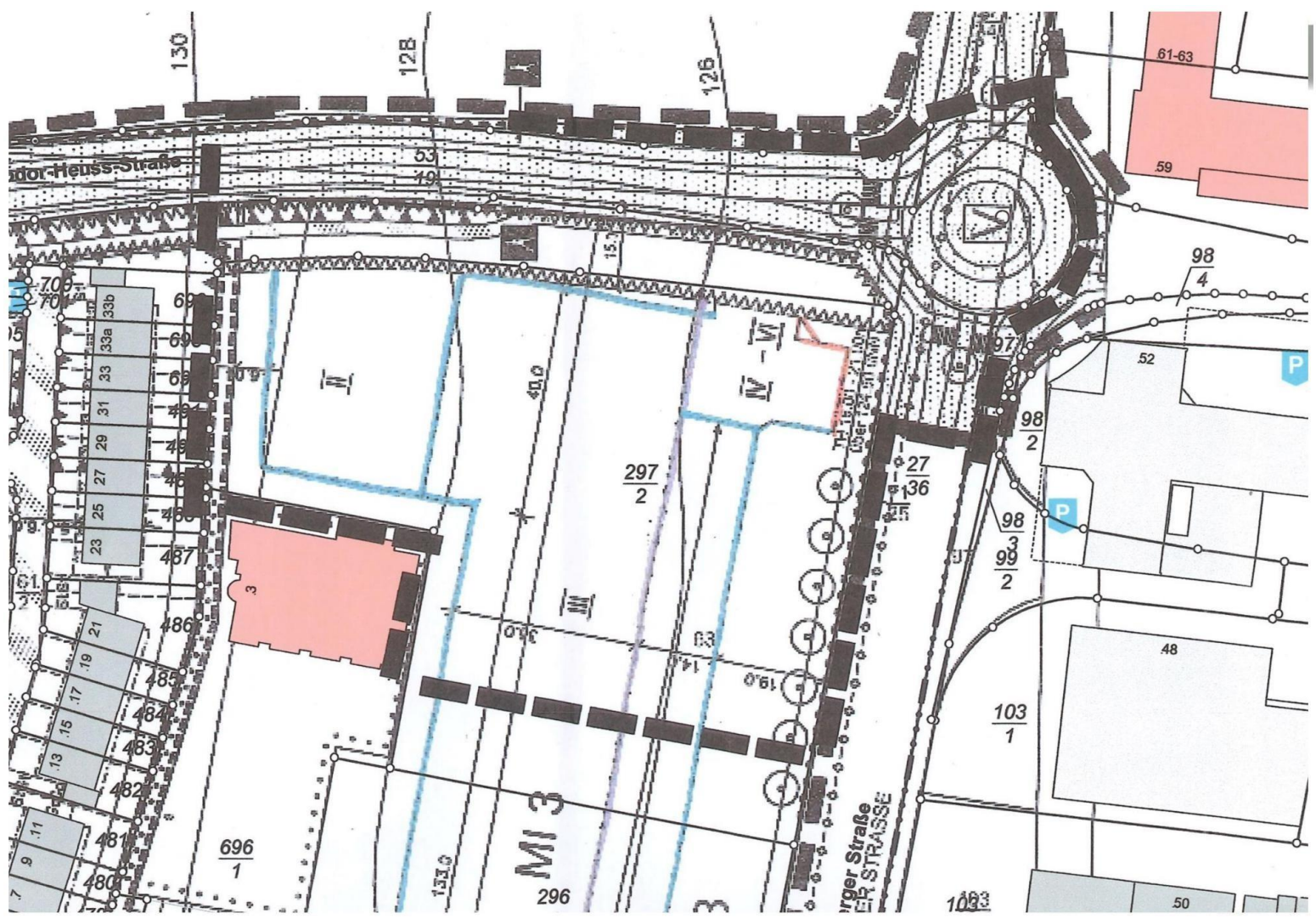
用地分析 (Analyse des Grundstücks)



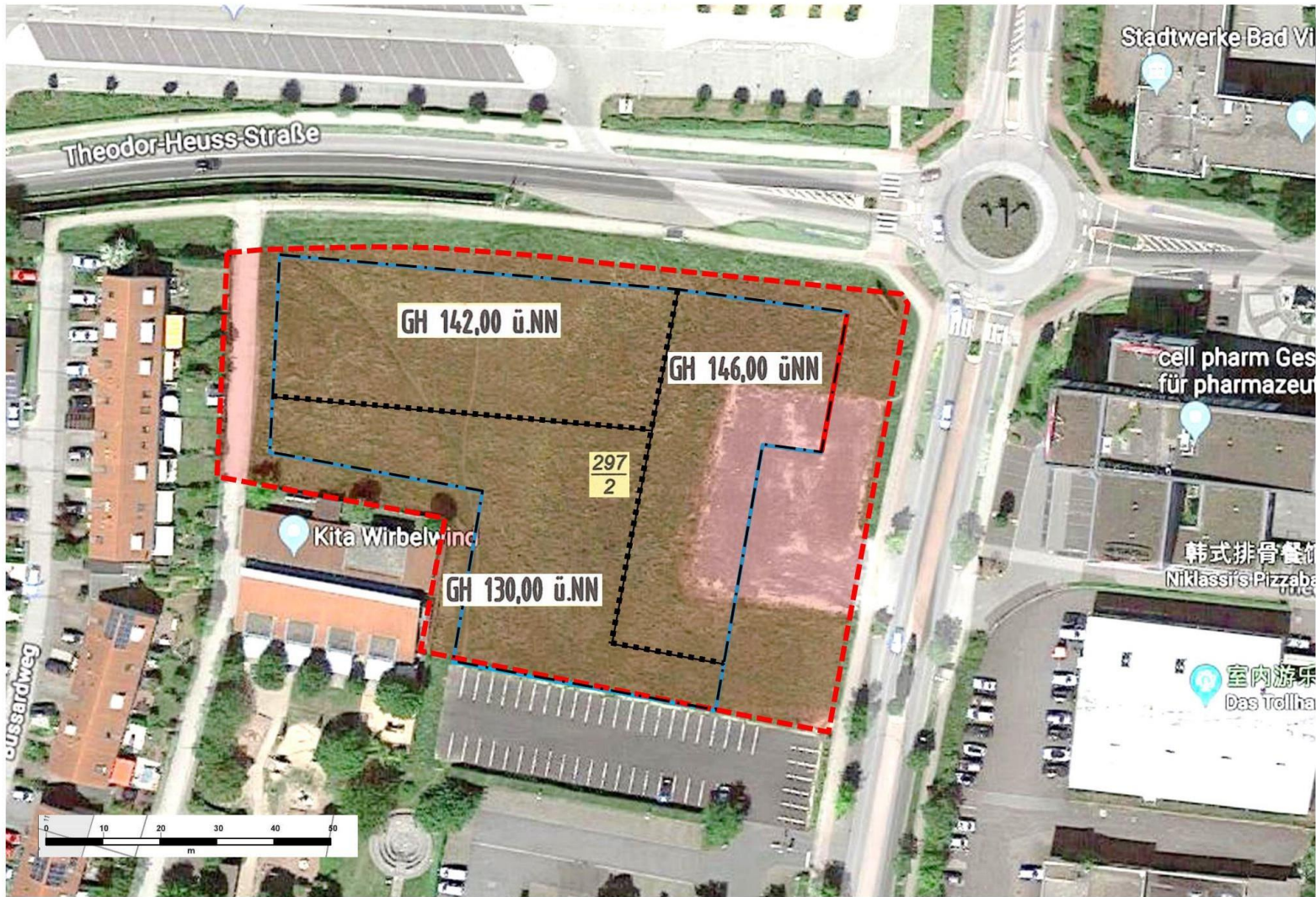
Mülkün analizi) - Mülk yeni
Dortelweil semtinde yer
almaktadır - kuzey tarafı:
Europa Schule - güney tarafı:
Bad Vilbel belediye binası -
doğu tarafı: Friedberger Straße
doğu-batıda 115 metre
genişliğinde, 45 ila 70 metre
derinliğinde kuzey-güney,
vadide batıdan doğuya doğru
hafif eğimli, 4 metre rakım farkı
va

- Das Grundstück befindet sich im neuen Distrikt Dortelweil
- nördlichen Seite : Europa Schule
- südlichen Seite : Rathaus Bad Vilbel
- Östlich Seite : Friedberger Straße
- 115 Meter breit im Ost-West
- 45 bis 70 Metern tief im Nord-Süd
- leichte Steigung talwärts von Westen nach Osten mit 4 Meter Höhenunterschied



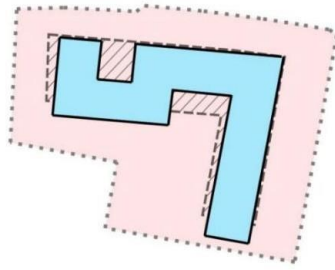




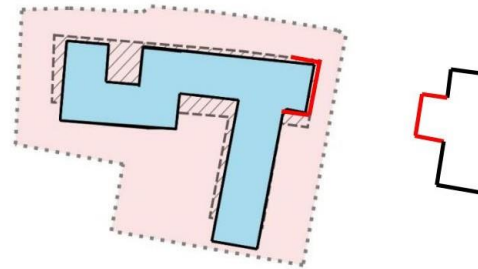


Konzeptentwicklung 设计演变展示

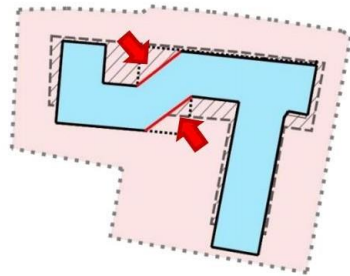
1, Grundidee 基本创意
temel fikir



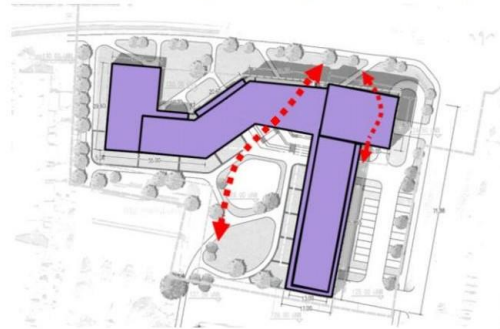
2, Stadteingang Symbol 城市入口符号
şehir giriş



3, Gebäudeorientierung Optimierung 建筑朝向优化
bina yönlendirme optimizasyonu

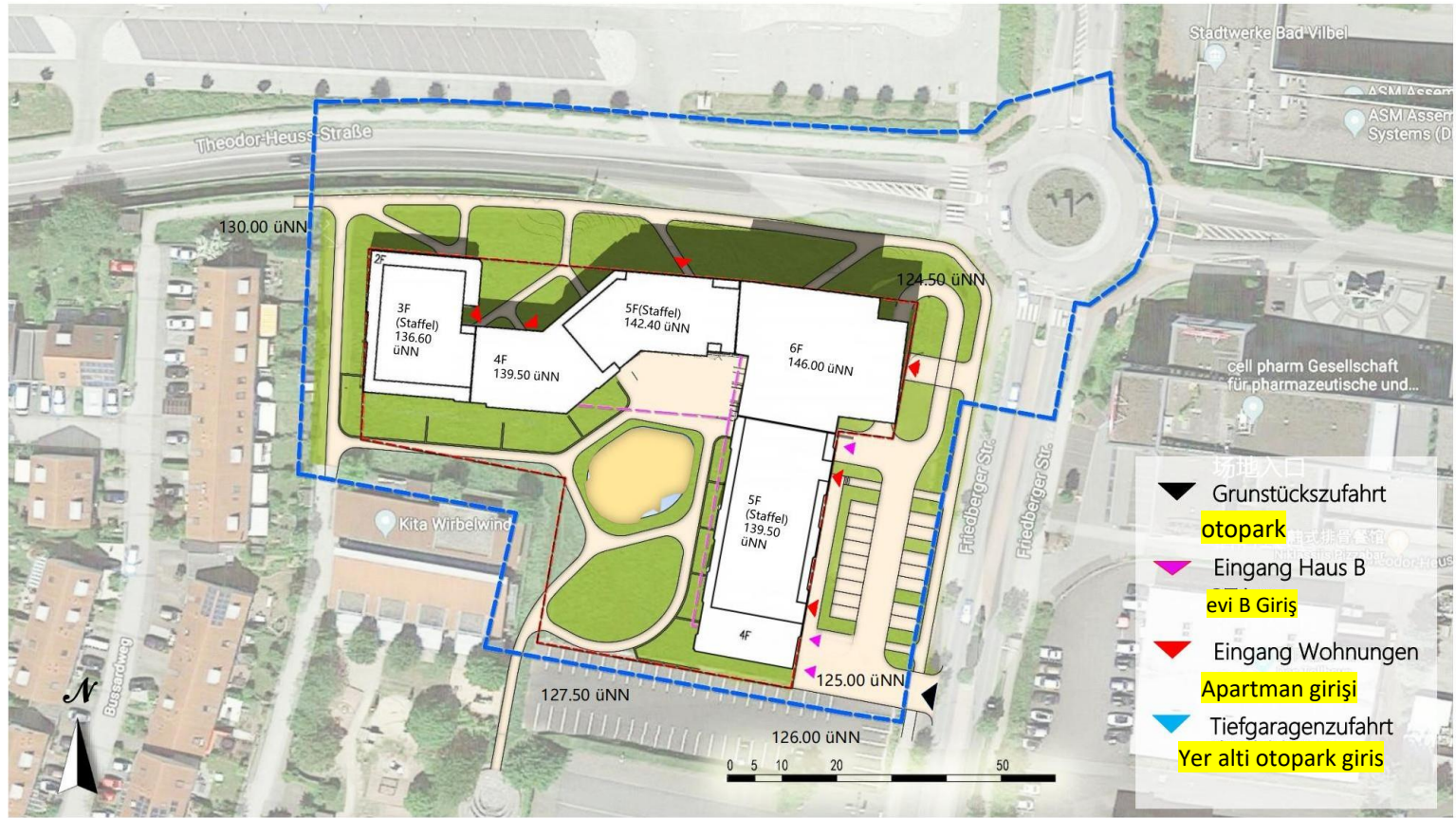


4, Optimierung fußläufiger Verbindungen 步行连接优化
Yaya bağlantılarının optimizasyonu



Lageplan 总平面图

Lageplan





尚都 环形广场方向

法兰克福 *Frankfurt* 项目





鸟瞰图 市政厅方向

法兰克福 *Frankfurt* 项目





鸟瞰图

法兰克福Dortelweid项目





鸟瞰图

法兰克福Dortelweid项目





尚都 后院

法兰克福 *Frankfurt* 项目



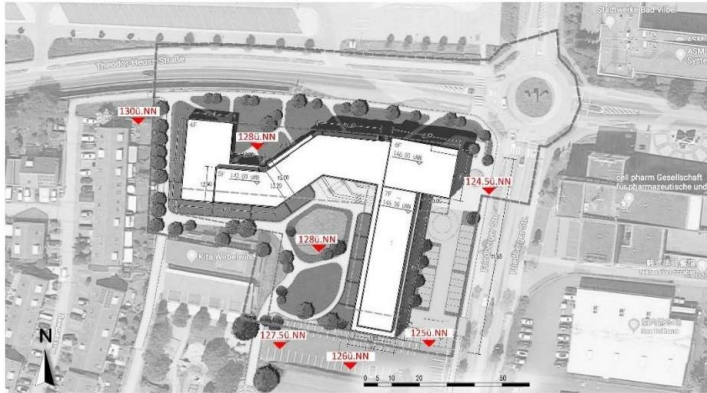


尚都 国际学校方向

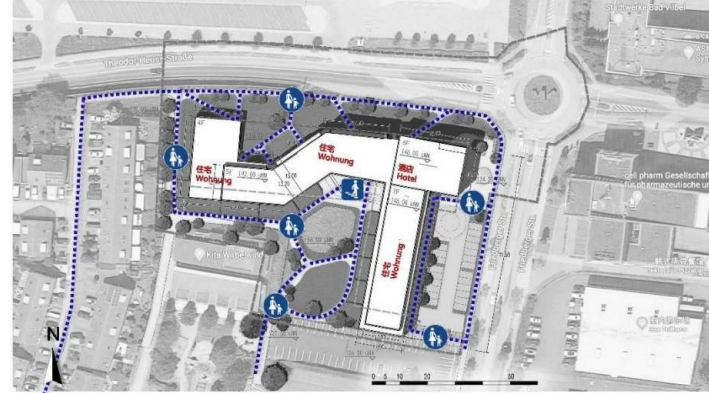
法兰克福*Frankfurt*项目



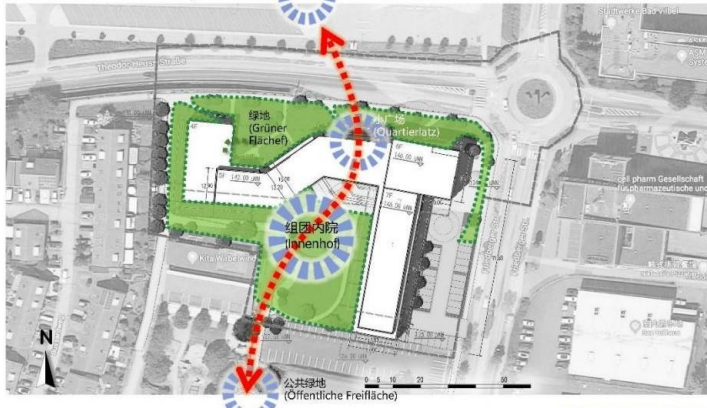
Höhenverlauf 地势分析



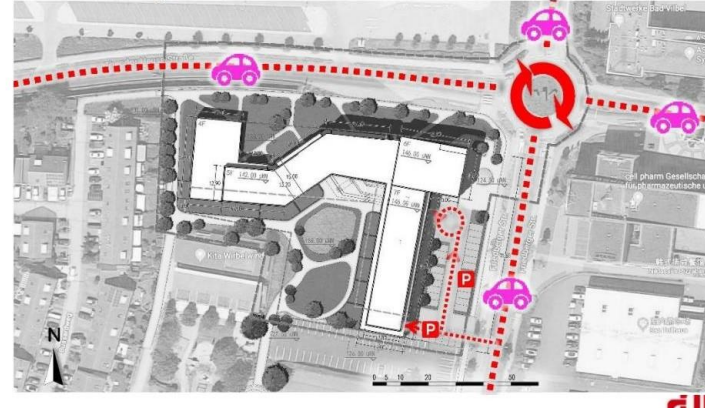
Erschließung Fußgänger 人行交通流线设计



Landschaftsanalyse 景观设计分析

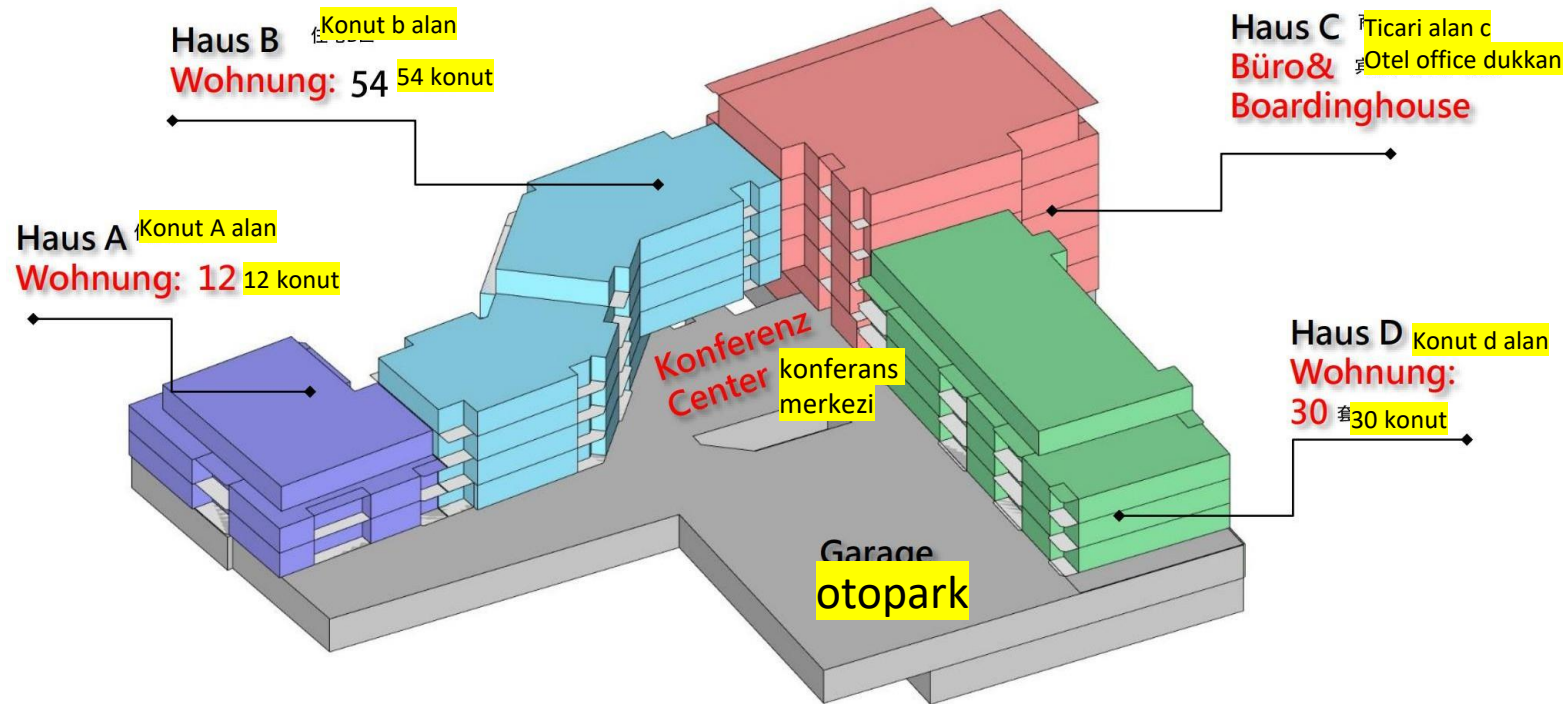


Erschließung mit KFZ 车行交通流线设计



(Technische
Daten)

主要数据



Haus A Konut A alan
2F+Staffelgeschoss 33 kat
BGF: 914m² Toplam infaat alan 914

Haus B Konut B alan
4F+Staffelgeschoss 5 kat
BGF:4244 m² Toplam infaat alan 4244

Haus C Ticari alan C
6F 6 KAT
BGF:2738.5
TOPLAM INSAAT ALAN
2738.5

Haus D Konut D alan
4F+Staffelgeschoss 5 kat
BGF: 3056m²
Toplam infaat alan

主要数据一览

GF : 7302 m² Arsa alan 7302 米
 BGF : 10954 m² Toplam infaat alan 10954
 GFZ : 1.50 Emsal 1.5
 Wohnung: Toplam konut 96 套
 Stellplatz(GiOtopark): 112 个
 地下停车位

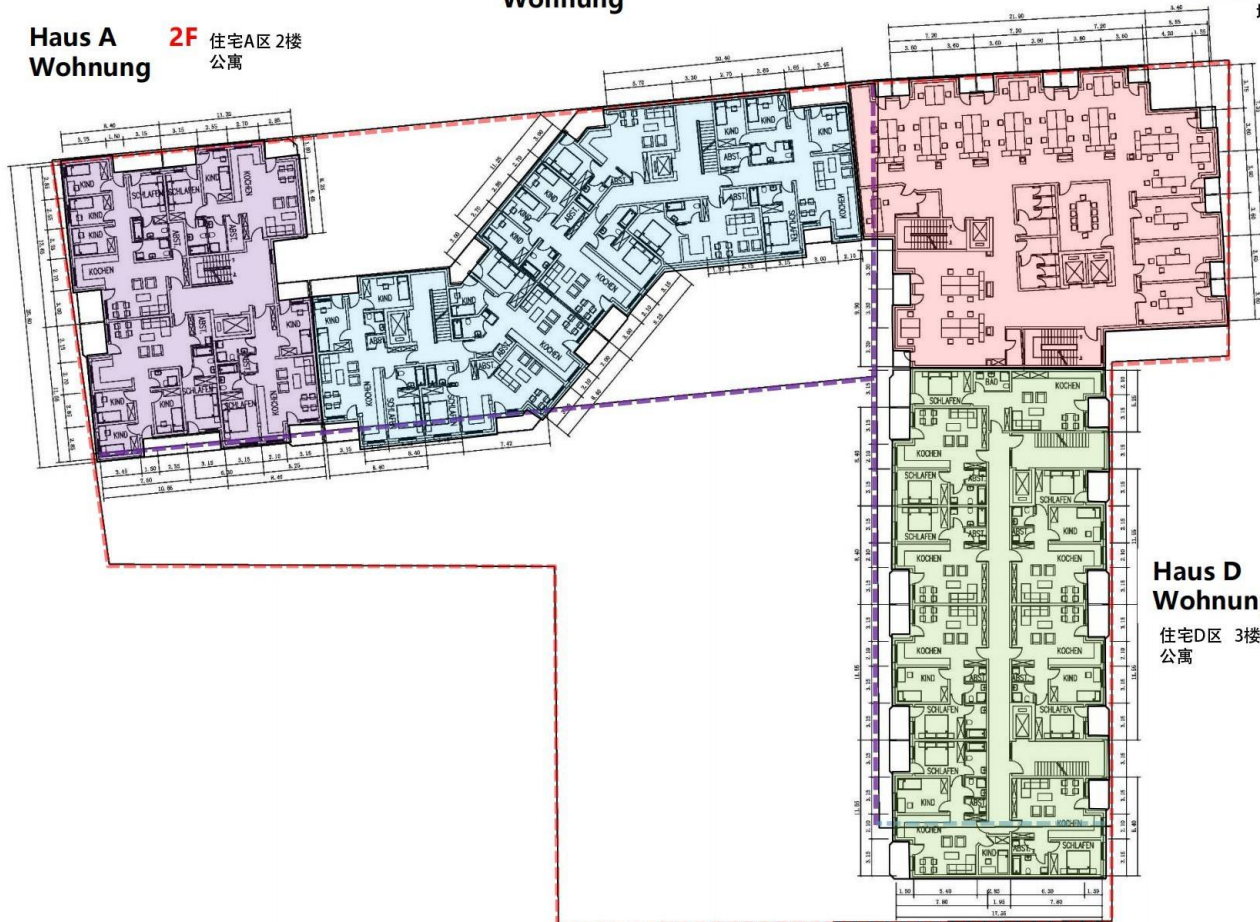


Regelgeschoss

地标准层平面图

Haus A Wohnung 2F 住宅A区2楼公寓

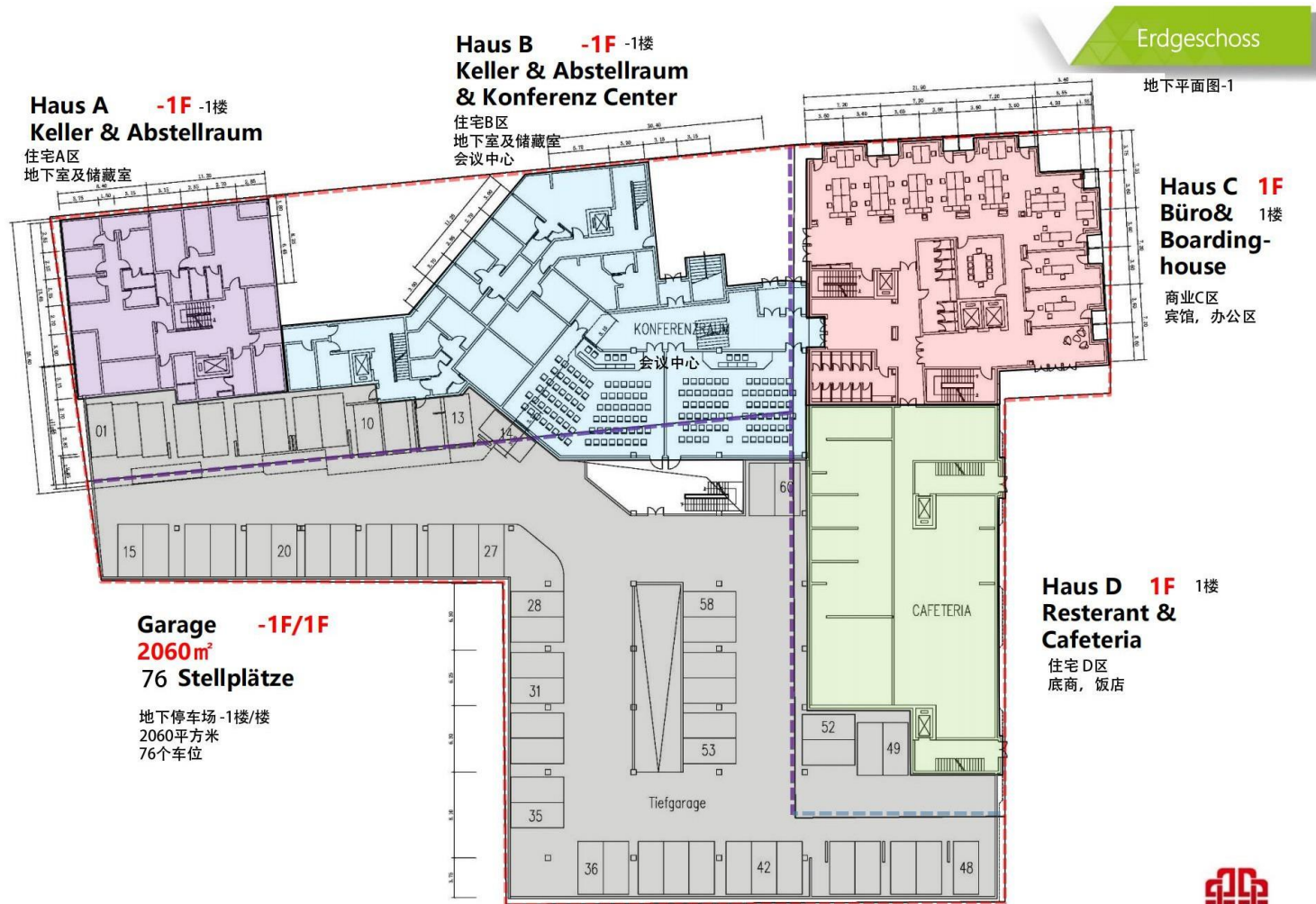
Haus B Wohnung 2F 住宅B区2楼公寓



Haus C 3F
Büro & Boarding-house
商业C区3楼
宾馆, 办公区

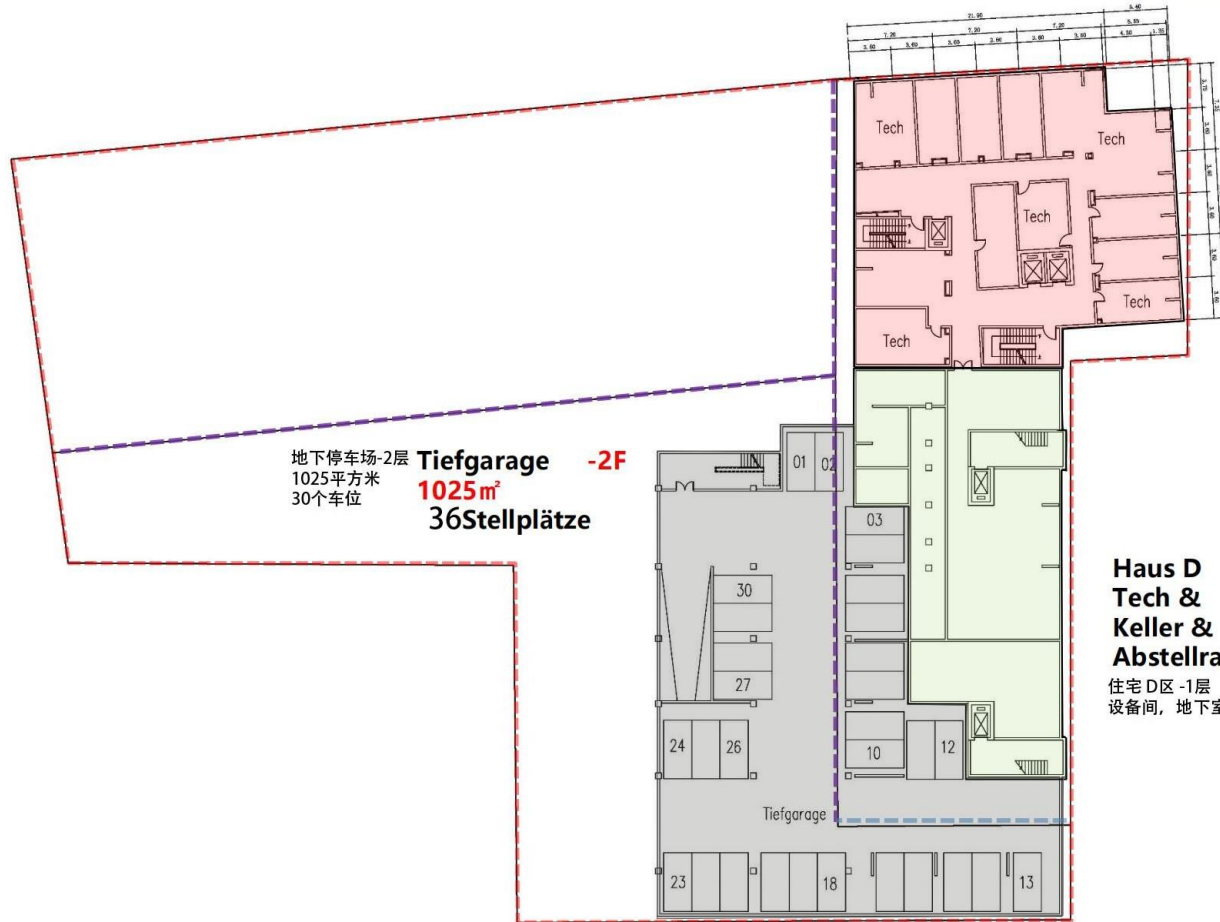
Haus D 3F
Wohnung
住宅D区3楼
公寓





Untergeschoss

地下平面图-2



地下停车场-2层
1025平方米
30个车位

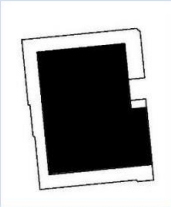
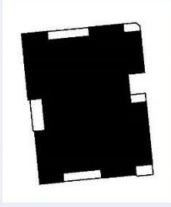
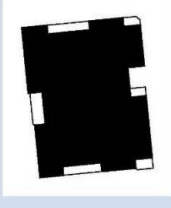
Tiefgarage -2F
1025m²
36Stellplätze

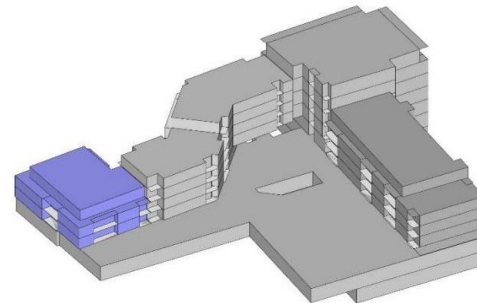
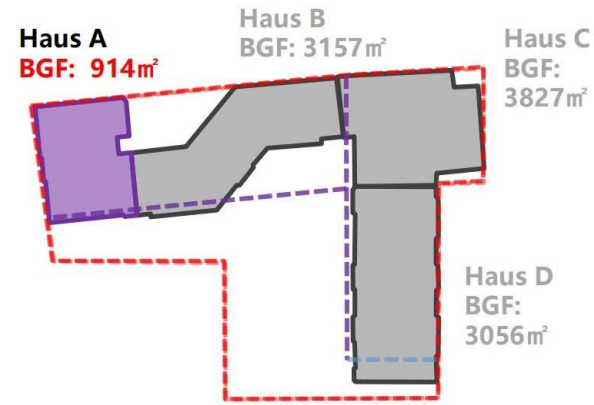
Haus C -1F
**Tech &
Keller &
Abstellraum**
商业C区-1层
设备间, 地下室及储藏室

Haus D -1F
**Tech &
Keller &
Abstellraum**
住宅D区-1层
设备间, 地下室及储藏室



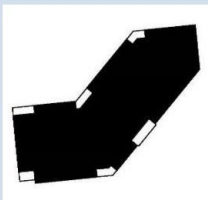
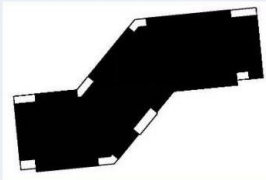
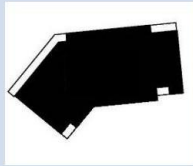
Haus A 住宅A区

		BGF:	Wohnung:
3F (staffel- geschoss) 3楼		340 m ²	4 套住宅
2F 2楼		457 m ²	4 套住宅
1F 1楼		457 m ²	4 套住宅
gesamt		914 m²	12 套住宅

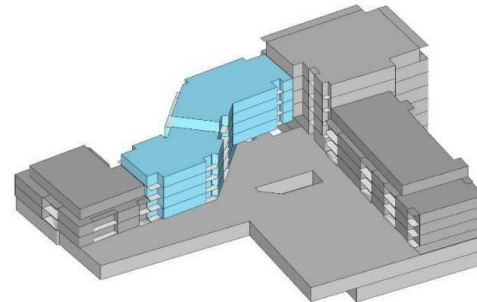
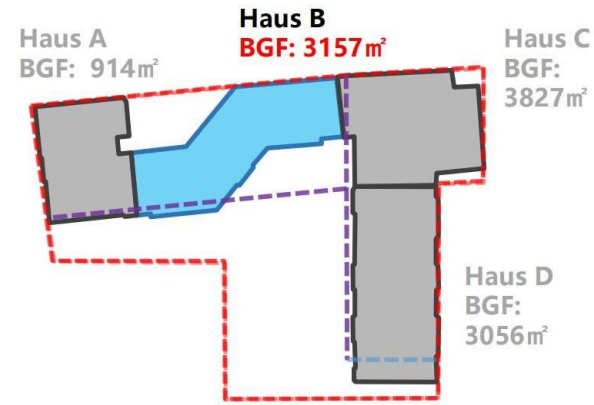


Haus B 住宅B区

	BGF:	Wohnung:
5F (staffel- geschoss) 5楼	760 m ²	9 套公寓
2-4F 2-4楼	950 m ² *3	36 套公寓
1F 1楼	634 m ²	9 套公寓
-1F 地下室	537 m ² 地下室不计面积	-
gesamt	4244 m²	54 套公寓

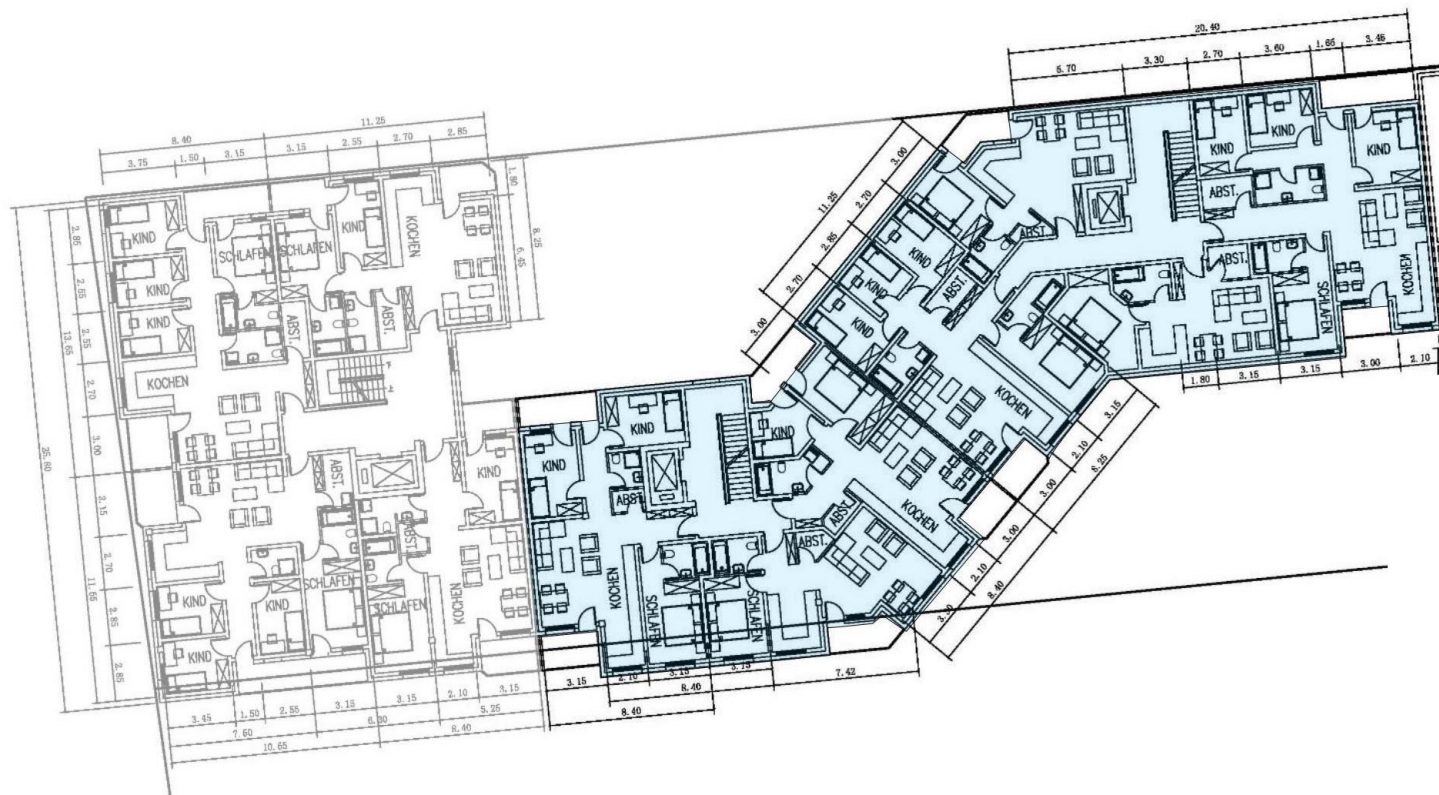


Haus B



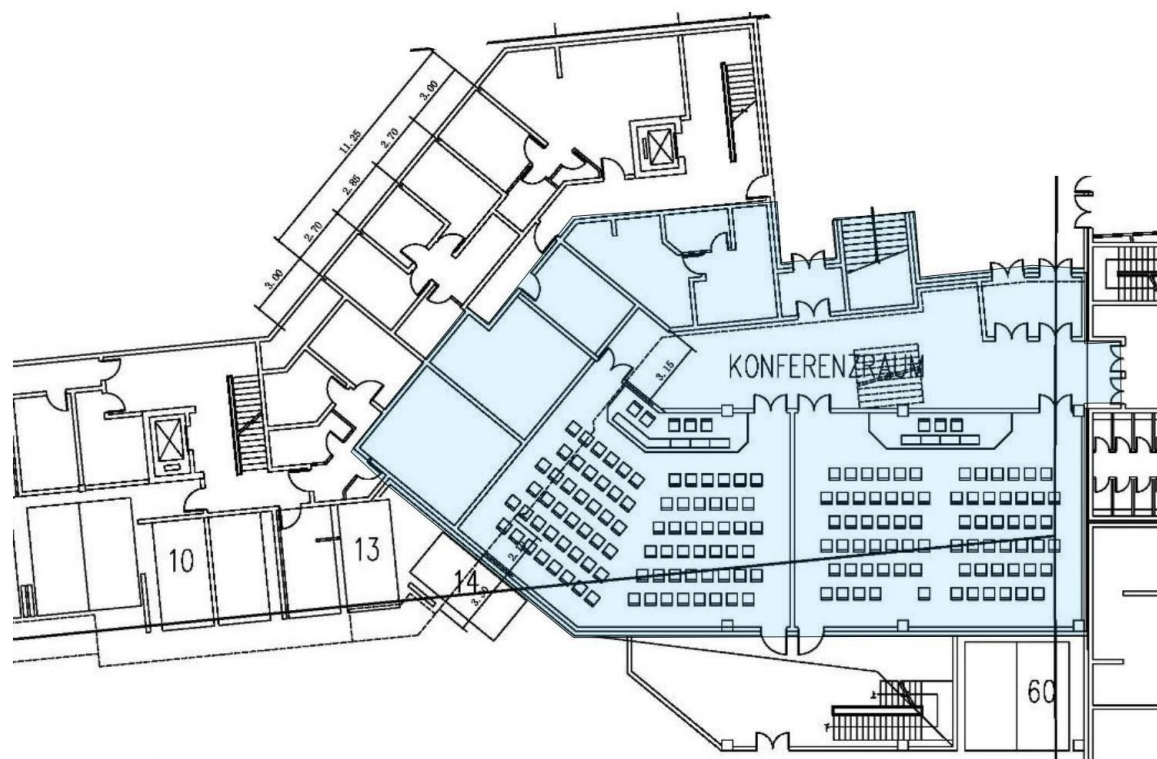
Haus B

住宅B区 标准层平面图



Haus B

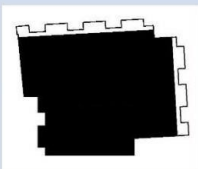
住宅 B区 地下
会议中心



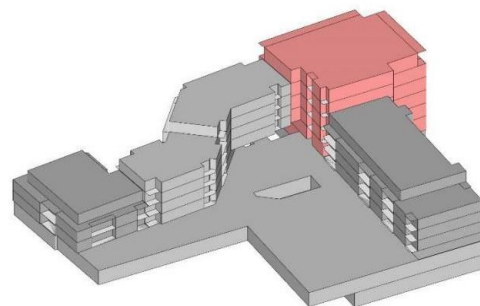
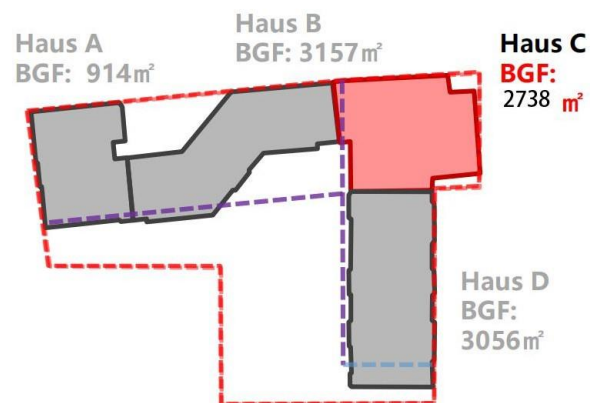
Konferenz Center

Haus C

	BGF:	
6F (staffel- geschoss)	420 m ²	Büro& Boarding- house 办公及宾馆
3-5F	482 m ²	Büro& Boarding- house 办公及宾馆
1-2F	436 m ²	Büro& Boarding- house 办公及宾馆
gesamt	2738 m²	

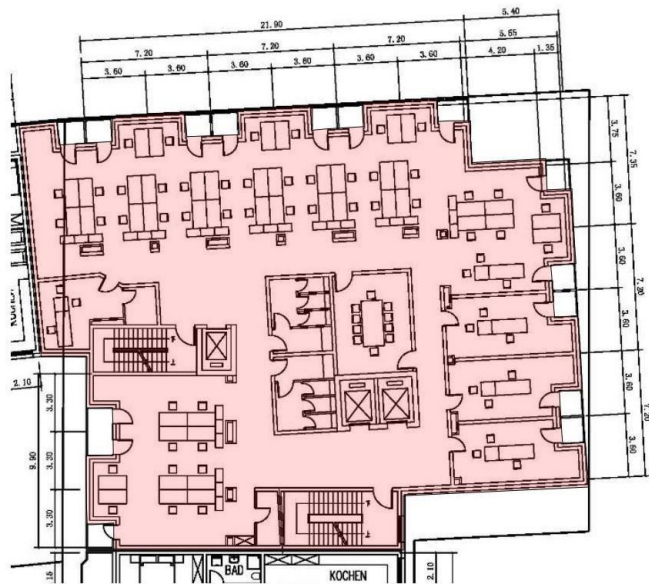


Haus C

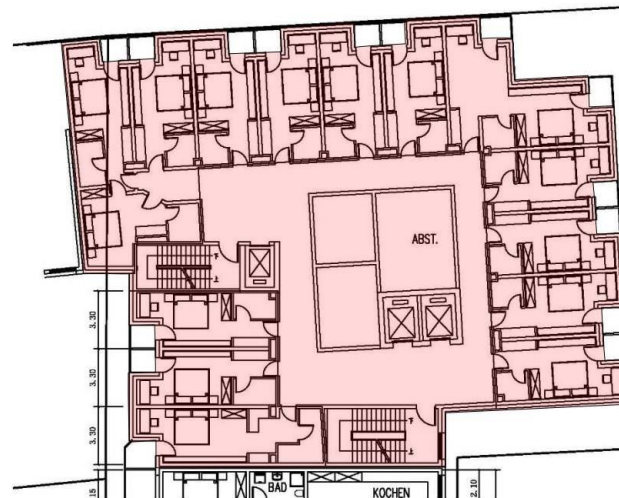


Haus C

商业C区标准层平面图



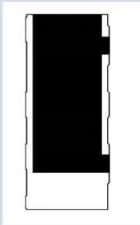
Büro 办公



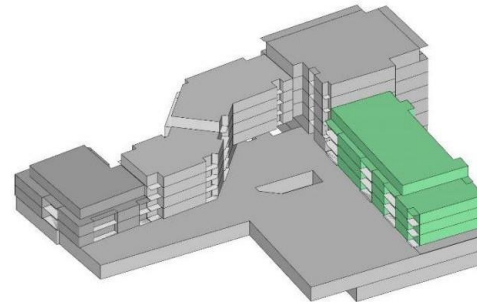
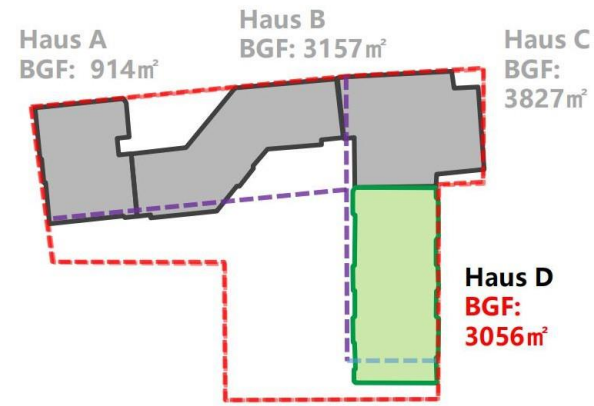
Boardinghouse 宾馆

Haus D 住宅D区

	BGF:	Wohnung:
5F (staffel- geschoss) 5楼	545 m ²	6 套公寓
2-4F 2-4楼	736 m ²	8x3 24套公寓
1F 1楼	848 m ²	-
gesamt	3056 m²	30套公寓



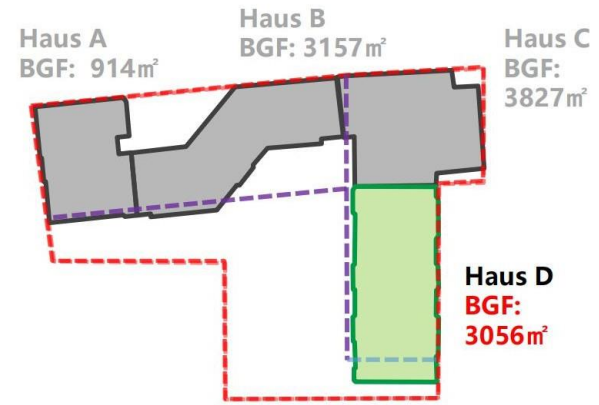
Haus D





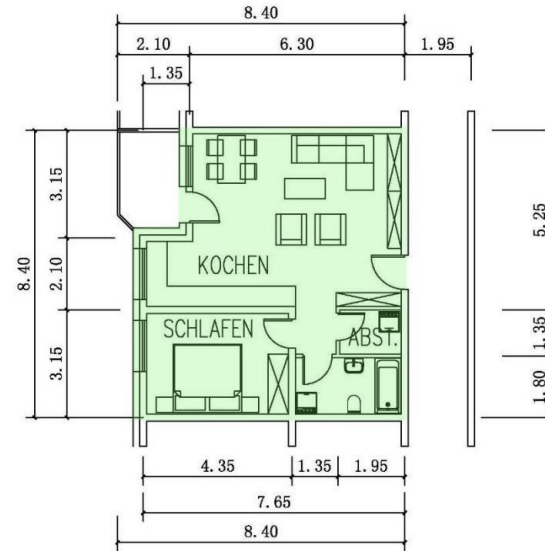
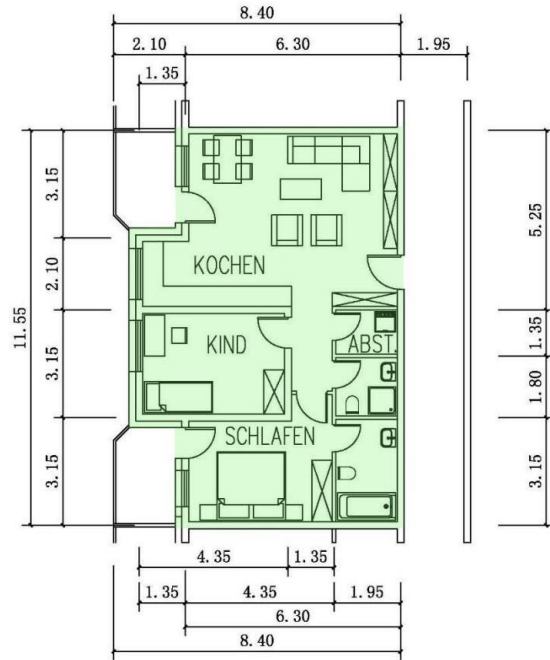
Haus D

住宅D区标准层平面图



Haus D

住宅D区标准间平面图





Danke
感谢!